

MAAN

MEDICAL & LABORATORY

www.maanolab.sc

WATER BATHS



Water Baths

CIRCULATING WATER BATH

Circulating Water Baths are ideal for applications where temperature uniformity and control are crucial, such as enzymes and serology.

These high performance baths range in capacity 18 and 25 ltr. and include a stainless steel diffuser shelf and a hinged gable cover as standard equipment.



SH-625

- 1- Water bath temperature monitored and controlled over the entire range with an accuracy of $\pm 0.1^{\circ}\text{C}$ with P.I.D temperature controller.
- 2- Precise temperature control up to 99.9°C .
- 3- Circulating pump direct water flows around bath perimeter for fast heating and better uniformed temperature control, $\pm 0.2^{\circ}\text{C}$ @ 37°C .
- 4- Easy to maintain stainless-steel interior chamber and powder-coated exterior resist most corrosion and chemical damages.
- 5- Easy to read LCD digital display provides a user-friendly interface which helps minimize errors in establishing running conditions.
- 6- Non-volatile memory retains preset parameters during a power failure and restarts unit automatically after the power is restored.
- 7- Electro polished SUS304 stainless steel hinged gable lid to prevent dust penetration, uncontrolled heat dissipation as well as water evaporations.
- 8- Low water level alarm.
- 9- Anti-drying function.
- 10- fitted with drain valve.

NON-CIRCULATING WATER BATH

- 1- Available in four different models, range in numbers of well compartment from 2 to 8 including a stainless steel diffuser shelf.
- 2- Precise temperature control up to 99.9°C.
- 3- Water bath temperature is monitored and controlled over the entire range with an accuracy of $\pm 0.1^\circ\text{C}$ with P.I.D temperature controller.
- 4- Easy to maintain stainless- steel interior chamber and powder- coated exterior resist most corrosion and chemical damages.
- 5- Easy- to - read LCD digital display provides a user-friendly interface which helps minimize errors in establishing running conditions.
- 6- Non-volatile memory retains preset parameters during a power failure and restarts unit automatically after the poer is restored.
- 7- Standard ring set to prevent dust penetration, uncontrolled heat dissipation as well as water absorption.
- 8- Low water alarm.
- 9- Anti-drying function.
- 10- Fitted with drain valve.



BB-726

PERSONAL MINI WATER BATH



- Personal sized tank of 5L
- Stainless steel interior tank and powder coated corrosion resistant exterior case
- LED display and analogue temperature settings
- High precision temperature sensor probe
- Precise temperature control with P.I.D microprocessor controller
- High- density insulation minimizes heat losses



MEDICAL & LABORATORY

www.maanlab.se

SPECIFICATIONS

Model	MW5	MW8	MW16	MW26	MW32	MW18C	MW25C
Volume(L)	5.5	8	16	24	32	18	25
Temperature	Ambient-99.9 C						
Control	P.I.D Microprocessor						
Temperature Accuracy	±0.1°C						
Circulation Pump	No					Yes	
Temperature Uniformity	±0.5°C @37°C					±0.2°C @37°C	
Lid	None	RingSet				GableLid	
Compartments	1	2x1	2x2	3x2	4x2	1	
Timer	Disabled	1 minute to 500 hours					
Setting	Analogue	Digital					
Display	LED	LCD					
Power(W)	1000	500	1000	1500	2000	1500	2000
Tank Dimensions (mm) (WxDxH)	ø220x150	320x160x160	320x160x160	480x320x160	640x320x160	350x300x225	400x320x250
Exterier Dimensions (mm) (WxDxH)	320x260x300	555x210x235	555x370x235	715x370x235	875x370x235	605x375x370	655x395x400
Packing Dimensions (mm) (WxDxH)	440x380x470	675x330x405	675x490x405	835x490x405	995x490x405	825x495x515	880x515x570
Weight	5kg	8kg	14kg	20kg	22kg	22kg	28kg
Electricity	220/240volt 50/60Hz	220/240volt 50/60Hz	220/240volt 50/60Hz	220/240volt 50/60Hz	220/240volt 50/60Hz	220/240volt 50/60Hz	220/240volt 50/60Hz
Approval	CE,ISO	CE,ISO	CE,ISO	CE,ISO	CE,ISO	CE,ISO	CE,ISO

sales@maanlab.se

MAAN

MEDICAL & LABORATORY

www.maanlab.se



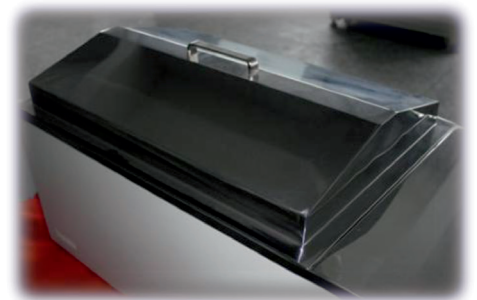
Features:

Solid electric drive mechanism provides uniform and quiet agitation and enables continuous 24 hour operation.

Water bath temperature is monitored and controlled over the entire range with an accuracy of with P.I.D temperature controller.

Easy-to-read LCD digital display provides a user-friendly interface which helps minimize errors in establishing running conditions.

Non-volatile memory retains preset parameters during a power failure and restarts unit automatically after the power is restored.



sales@maanlab.se

Water Bath Shakers

Model	MGL30	ML30	MGL50	ML50
Volume(L)	30		50	
Gable Lid included	Yes	No	Yes	No
Shaking mode	Reciprocal			
Temperature range (°C)	Ambient- 99.9			
Temperature accuracy	±0.1°C			
Temperature uniformity	±0.2C 37°C 100rpm			
Timer	1 minute to 500 hours			
Stroke (mm)	16 (default setting) , 24			
Speed range (rpm)	20-180			
Tray (mm) (WxD)	434x256		494x316	
Capacity*	*Glass dimensions may reduce max capacity			
50 ml	15		24	
100 ml	15		24	
250 ml	11		15	
500 ml	6		11	
1000 ml	-		6	
Inner Dimensions (mm)	508x300x198		568x360x250	
Exterior Dimensions (mm)	732x348x342		792x408x392	
Packing Dimensions (mm)	860x470x500		920x530x550	
Net / Gross weight (kg)	18/24		23/30	
Power (W)	1600		2300	
Electricity	220/240 volt , 50/60Hz			
Approval	CE,ISO			

